



## Technical Data Sheet

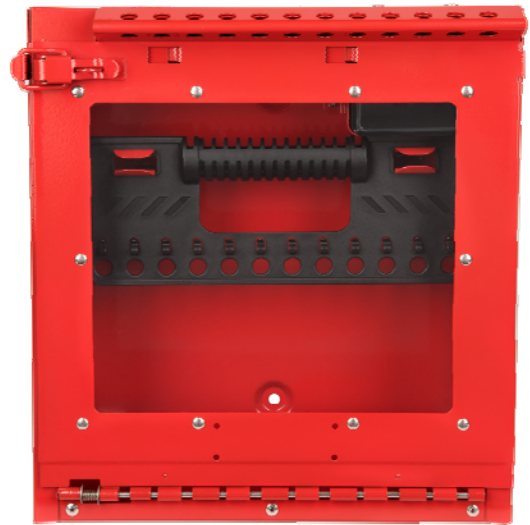
### S3502 Wall Mount Group Lock Box

Date of last revision: 2017/07/25

#### Description:

##### Design:

- Stainless steel construction for excellent weather and wear resistance
- Durable window allows for easy viewing of locks and keys
- Slide out key cup for easy key retrieval
- Removable lock caddy for convenient transport of locks to location needed
- Lockout holes for 12+1 locks including control lock position. Can accept locks with shackles up to 3/8"(9.5mm)
- Wall mountable and attaches easily to Permit Display Station S3501
- Can be chained together with other S3502 units, to handle larger facilities with multiple lockout requirements
- Can be customized with optional brass or aluminum tag



##### Construction Materials

Body: 430 Stainless Steel

Permit window: Polycarbonate

Lock Caddy: Polypropylene

##### Chemical compatability

4% Sodium Hypochlorite	Ok	Methylene Chloride	Ok
8% Acetic Acid	Ok	Naphtha	Ok
13% Sodium Metasilicate	Ok	n-Hexane	Ok
Diethyl Ether	Ok	Polydimethyl-siloxane	Ok
Methanol	Ok	Toluene	Ok

NR=Not recommended

##### Dimensions

Overall Height	13.7"/347mm
Overall Width	12.6"/319mm
Overall Depth	4.7"/119mm
Window Height	8.2"/209mm
Window Width	9"/229mm
Weight	8.4lbs/3.8kg

##### Weatherability (ASTM F883-09, 11)

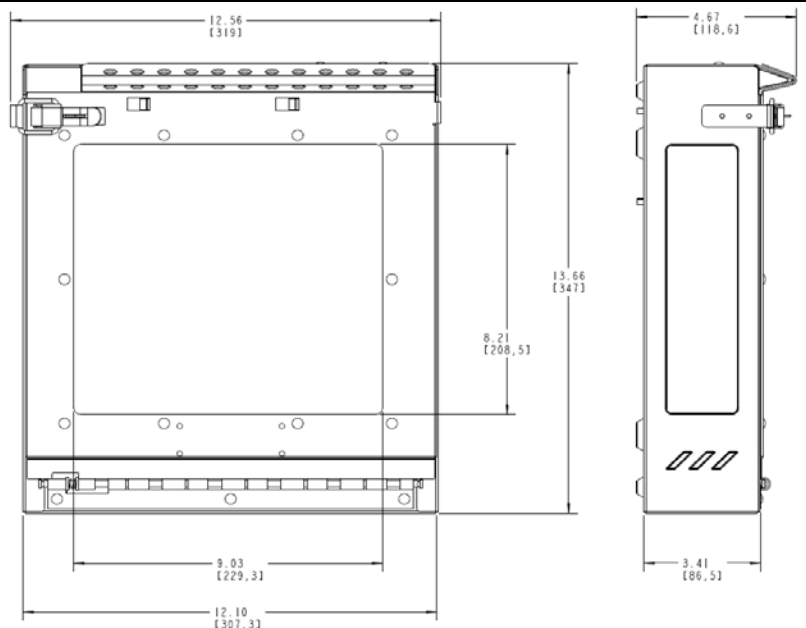
Salt Fog	Grade 6 (Scale 1-6)
Salt/UV	Grade 6 (Scale 1-6)
Operating temp	-40 to 200F/ -40 to 93C

##### Compliance

REACH

ROHS

ATEX (By letter of exclusion)



**Disclaimer:**

All statements, technical information and recommendations contained herein are for general reference purposes only and are based on testing and knowledge that Master Lock believes are reliable.

User is solely responsible for thoroughly testing and evaluating this product to determine its form, fit and function for a particular purpose or application – which can affect the use and performance of the Master Lock product.

Master Lock bases its material content knowledge of its products on information provided by third-parties and has taken and continues to take commercially reasonable steps to provide representative and accurate information, but may not have conducted destructive testing or chemical analysis on incoming materials.

This statement is governed and subject to the provisions of Master Lock's warranty which is available upon request and the limitation of liability provisions in its terms and conditions.

Note: The English version of this sheet is the document of record, all other versions are provided as a courtesy. In the event of data discrepancies, the English version should be used.

© 2017 The Master Lock Company | All Rights Reserved

Material may not be reproduced or distributed in any form without written permission.

The Master Lock Company | 6744 S. Howell Avenue | Oak Creek, WI 53154